



VRV IV S-series heat pump

RXYSCQ-TV1 / RXYSQ-TV1 / RXYSQ-TY1

A wide range, big on features



They may be discreet, but Daikin VRV IV S-series units stand out when it comes to benefits they deliver. They provide the perfect indoor climate, while remaining totally discreet from the outside. If you need efficient and effective air conditioning from a completely unnoticeable unit, look no further.

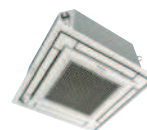
Features

- › A wide range of stylish residential or commercial indoor units can be connected
- › A total air conditioning solution integrating air handling units and/or air curtains
- › Complete reliability thanks to refrigerant-cooled PCB
- › Suitable for bigger projects of up to 150 to 200m²
- › Light weight unit (down to 88kg) is easy to install and handle
- › A perfect match for any application thanks to the wide range of small-footprint units
- › Widest range of front blow units on the market

Total solution



Daikin Emura
wall mounted unit



Fully flat cassette



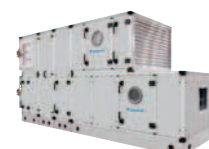
Biddle air curtain



Nexura



Fully flat cassette



Air handling unit ventilation



10/12 HP

8 HP

4/5/6 HP

4/5 HP

Most compact unit on the market
823mm high & 88kg

Compact:
Easy for a two person crew to move and install.



www.youtube.com/DaikinEurope



VRV IV S-series compact heat pump

The most compact VRV

- › Compact & lightweight single fan design makes the unit almost unnoticeable
- › Covers all thermal needs of a building via a single point of contact: accurate temperature control, ventilation, air handling units and Biddle air curtains
- › Wide range of indoor units: either connect VRV or stylish indoor units such as Daikin Emura, Nexura ...
- › Incorporates VRV IV standards & technologies: Variable Refrigerant Temperature and full inverter compressors
- › 3 steps in night quiet mode: step 1: 47 dBA, step 2: 44 dBA, step 3: 41 dBA
- › Possibility to limit peak power consumption between 30 and 80%, for example during periods with high power demand
- › Contains all standard VRV features



RXYSCQ-TV1

Outdoor unit				RXYSCQ	4TV1	5TV1
Capacity range				HP	4	5
Cooling capacity	Nom.			kW	12.1	14.0
	Max.			kW	14.2	16.0
Power input - 50Hz	Cooling	Nom.		kW	3.43	4.26
		Max.		kW	4.14	5.00
	Heating	Nom.		kW	3.18	3.91
EER				kW	3.53	3.29
COP at nominal capacity				kW	3.81	3.58
COP at maximum capacity				kW	3.43	3.20
Maximum number of connectable indoor units					64 (1)	
Indoor index connection	Min.				50	62.5
	Nom.				-	-
	Max.				130	162.5
Dimensions	Unit	HeightxWidthxDepth		mm	823x940x460	
Weight	Unit			kg	94	
Fan	Air flow rate	Cooling	Nom.	m ³ /min	91	
Sound power level	Cooling	Nom.		dBA	68	69
Sound pressure level	Cooling	Nom.		dBA	51	52
Operation range	Cooling	Min.~Max.		°CDB	-5~46	
	Heating	Min.~Max.		°CWB	-20~15.5	
Refrigerant	Type				R-410A	
	Charge			kg	3.7	
				TCO ₂ eq	7.7	
	GWP				2,087.5	
Piping connections	Liquid	OD		mm	9.52	
	Gas	OD		mm	15.9	
	Total piping length	System	Actual	m	-	
Power supply	Phase/Frequency/Voltage			Hz/V	1~/50/220-240	
Current - 50Hz	Maximum fuse amps (MFA)			A	32	

(1) Actual number of units depends on the indoor unit type (VRV DX indoor, RA DX indoor, etc.) and the connection ratio restriction for the system (being; 50% ≤ CR ≤ 130%).

(2) Contains fluorinated greenhouse gases